

# SLIDING TURNSTILE MECP-ST-100

**MECP-ST-100 Sliding turnstiles** move horizontally along a track or rail system. It opens and closes by sliding to the side, rather than swinging like a traditional hinged gate. Sliding turnstiles provide a higher level of security as they make it difficult to jump over or crawl under.

The sliding gate turnstile provides bi-directional and unidirectional access control and free passage modes. In access control mode, upon receipt of a valid open signal from an access control system, the motorized barrier flap of the turnstile quickly retract into the cabinet, and the integrated sensors allow a single user to pass through the turnstile in the requested direction. If an unauthorized user attempts to tailgate on the entry, the unit will recognize the illegal passage, a violation alarm (with user configurable sounds) will sound. At the same time, a special fire control interface is equipped in the system to meet the requirement of fire control passage, so that a rapid down rod control may be realized when emergency. We can also make it to be ADA lane for handicapped or luggage access.



PASSING SPEED



PASSAGE FOR DISABLE



BI-DIRECTION



110V-220V  
POWER SUPPLY



ANTI-TAILGATING

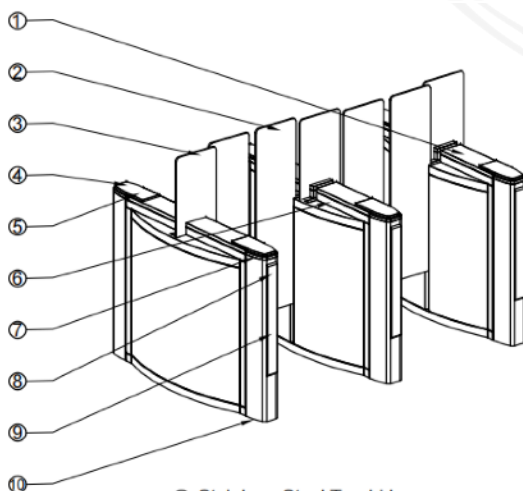


IP 41  
PROTECTIVE LEVEL

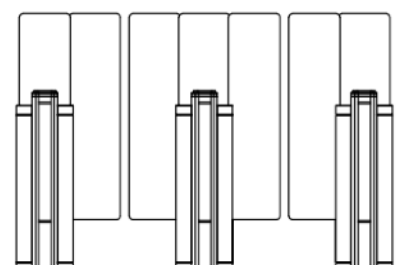
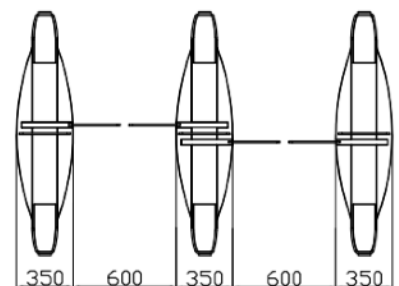
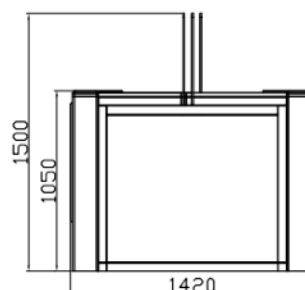


Dimension	1420*350*1050mm (4.66*1.15*3.45ft) (standard)
Passage Width	600mm (1.97ft)
Arm height (600mm passage width)	1200mm(3.94ft) above ground (Max 1500mm(4.92ft) )
Arm height (900mm passage width)	1200mm(3.94ft) above ground (Max 1500mm(4.92ft) ) <i>* The gate case will be widened and the swing arm can only be made of acrylic.</i>
Pass Rate	35-45 person/min
Mechanism	Servo motor
IR sensor	6 pairs
Frame Material	SUS304
Sliding arm Material	Acrylic(standard), Tempered glass
Power Supply	100V-240V, 50/60Hz
Open Signal	Passive Relay (Dry Contact)
Communication	RS485
Working Direction	Bi-directional(standard), Unidirectional
Working Temperature	-35°C ~ 60°C
Working Environment	Indoor
Relative Humidity	95% Maximum

- **LED ALERTS** Indicate traffic direction with highly-visible green and red X icons. It achieve real time displaying which improve the passing rate and convenient maintain.
- **EMERGENCY EXIT** The function allows free passage in the event of an emergency or power outage, automatic reset when power is restored.
- **WORKING DIRECTION** Single directional or Bi-directional is optional.
- **AUTOMATIC RESET** The arms will lock automatically within 5s (adjustable) if a person delay to access.
- **ANTI-PASS BACK** The gate will stay in lock if someone wants to entry in the reverse direction.
- **ANTI-INTRUSION** The gate is locked automatically until a valid open signal is sent.
- **FAST UNLOCK** One there is a valid signal, the gate will unlock within 0.2s (adjustable) .
- **HIGH PERFORMANCE** Long-life performance, high operation dependability and fast response.
- **HIGH MECHANISM** Full height mechanism, running smoothly and stable
- **ALARM FUNCTION** Infrared sensor alarm function, in case of illegal intrusion and reverse intrusion.



- ① Stainless Steel Top Lid
- ② Widen Flap Arm
- ③ Acrylic Barrier
- ④ Acrylic CARD Window
- ⑤ Direction Indicator
- ⑥ IR Sensor Cover
- ⑦ Lane Status Indicator
- ⑧ Lane Status Indicator
- ⑨ Acrylic Decorative Bar
- ⑩ Position of Fixing Screw





- Dimension: Can be made according to the client's site.
- Available max passage width can be 900mm (for wheelchairs and luggage).
- Sliding arm material available in acrylic or tempered glass.
- Material: 304 stainless steel to 316 stainless steel (wet environment), or iron with powder coated (color can be customized).
- Infrared sensors can be added.
- LED can be added on arms.
- Mounting base (for above floor wiring) and removable base (for temporary events) can be added.
- Cutouts can be customized to fit any reader.
- LOGO can be customized.
- Customized 3D drawings are available based on the site photos.
- OEM& ODM service is available.

➤ Please check with sales for customization fees.

*Our gates come with relay signals and RS485/RS232 interfaces. You can use your own access control system, or we can provide a complete access control system to you.*



Remote control



RFID card



QR code/ barcode



Counter



Face recognition



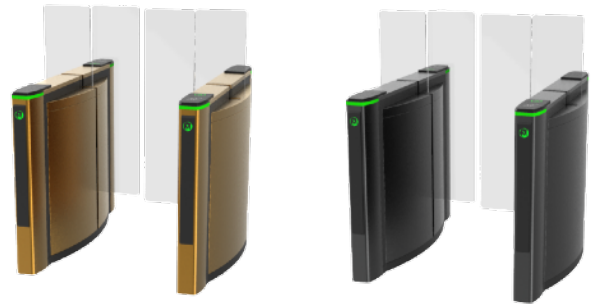
Fingerprint recognition



Coin/Card collection



Button



*Other frame colors available, RAL or RGB required.*



Black



Gray



Green



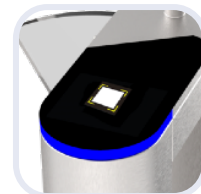
Blue



Red



*Mounting base*



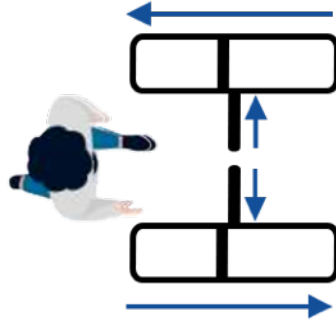
*Cutouts can be customized to fit any reader.*



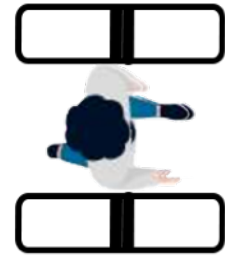
*LOGO can be customized.*



Powered of equipment  
with Super Capacitor Backup



In case of a power  
outage, obstacles are  
unlocked and  
automatically open in the  
direction of egress.



Obstacles are locked in  
the open position so as  
not to interfere with the  
evacuation process.



One lane



Two lanes



Three lanes

