

# M Series



## M series flap turnstile MECP-F-100

---

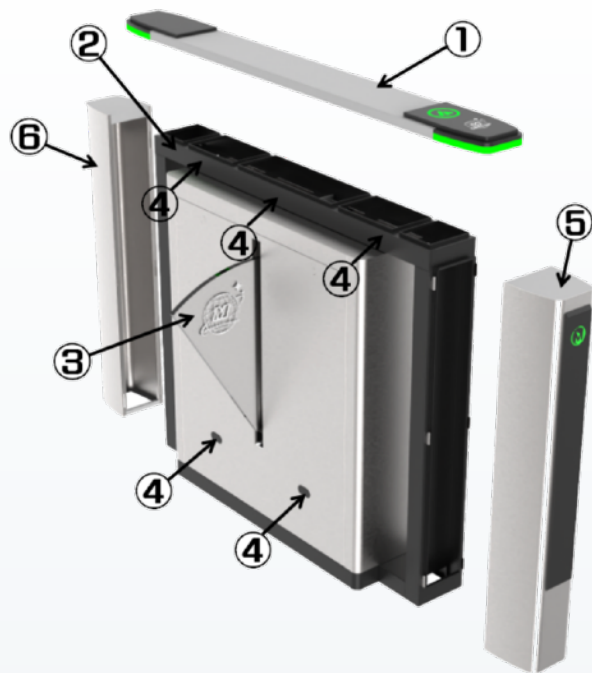
Skeleton structure: more secure

Chassis: a snap-fastener structure, easy to install

Top Lid: hidden screw, more stable and higher security

[www.mairseurope.eu](http://www.mairseurope.eu)

- ① Top cover
- ② Framework
- ③ Acrylic flap arm
- ④ IR sensors (5 pairs)
- ⑤ Front post
- ⑥ Rear post



**M Series Logo**  
Support customization



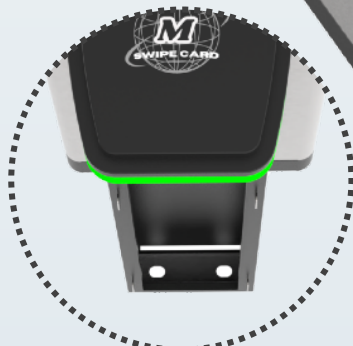
**M Series Direction Indicator**  
**M Series Swipe Card Logo**



**Framework structure,**  
**more sturdy**



**Lane Status Indicator**



**Outside fixing holes**  
**for easy installation**



**Snap-in design**  
**for easy installation**



## Technical Specifications

Gate Dimension	1420*280*990mm (4.66*0.92*3.25ft) (standard)	
Gate Material	SUS304 and powder coated	
Swing arm Material	Acrylic swing with LED (standard)	
Passage Width	Standard	600mm (1.97ft)
	Optional	900mm (2.95ft)
Power Supply	100V-240V, 50/60Hz	
Operational voltage	Standard	24V/20W 10K
	For widen flap arms	24V/20~60W 50K
Voltage of indicator lamp	DC12V ±5% (standard)	
Mechanism	Standard	Full height mechanism with DC motor
	For widen flap arms	Full height mechanism with Brush motor
MCBF	5,000,000 Cycles	
Passage direction	Unidirectional/Bi-directional	
IR sensor	6 pairs	
Open Signal	Passive Relay (Dry Contact)	
Communication	RS232(standard)/RS485	
Passing speed	35 persons/min	
Working Temperature	-15 °C - 60 °C	
Working Environment	Indoor	

## Feature

- **LED ALERTS** Indicate traffic direction with highly-visible blue, green and red. The front LED will keep blue shows that the lane is available. If the lane is not available, it can modify to be red.
- **LANE STATUS LED** If the access is granted, the LED will be in green. In standby, the LED is blue. If denied access, the LED flash red.
- **ALARM FUNCTION** Infrared sensor alarm function, in case of illegal intrusion and reverse intrusion.
- **EMERGENCY EXIT** The function allows free passage in the event of an emergency or power outage, automatic reset when power is restored.
- **WORKING DIRECTION** Single directional or Bi-directional is optional.
- **AUTOMATIC RESET** The flap arms will lock automatically within 5s (adjustable) if a person delay to access.
- **ANTI-PASS BACK** The gate will stay in lock if someone wants to entry in the reverse direction.
- **ANTI-TRAILING** The gate will alarm if more than one person passby without permission.
- **ANTI-INTRUSION** The gate is locked automatically until a valid open signal is sent. When there is a valid signal, the gate will unlock within 0.2s (adjustable) .
- **HIGH MECHANISM** Full height mechanism, running smoothly and stable
- **ALARM FUNCTION** Infrared sensor alarm function, in case of illegal intrusion and reverse intrusion.



PASSING SPEED



PASSAGE FOR DISABLE



BI-DIRECTION



110V-220V  
POWER SUPPLY



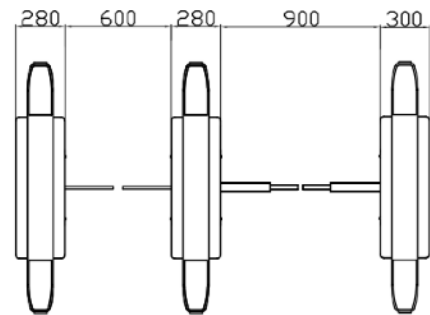
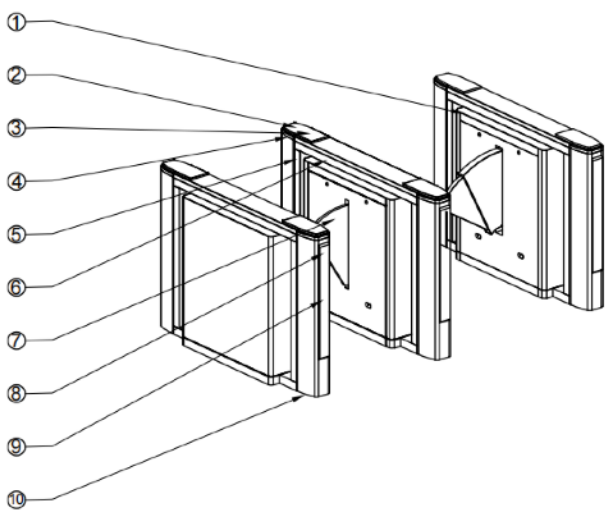
ANTI-TAILGATING



PROTECTIVE LEVEL

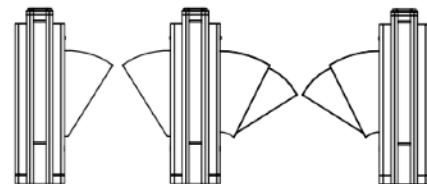
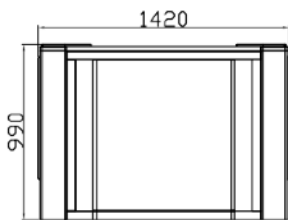


# Dimensions



*\*Lane width 600-900mm available.*

- ① Stainless Steel Top Lid
- ② Acrylic CARD Window
- ③ Direction Indicator
- ④ Lane Status Indicator
- ⑤ Framework
- ⑥ IR Sensor Cover
- ⑦ Acrylic Flap Arm
- ⑧ Lane Status Indicator
- ⑨ Acrylic Decorative Bar
- ⑩ Position of Fixing Screw



*\*Gate size and lane width can be customized to site dimensions.*

# Lane combination



One lane



Two lanes



Three lanes





# Customization

## The cutout for readers can be customized

*Provide us with the dimensions of the card reader/ scanner or other access control reader and we will customize the cutout according to its dimensions.*



## Optional dual-layer retractable flap arms

*Passage width up to 900mm (for wheelchairs and luggages)*



## LOGO can be customized

*Logo can be printed on swing arm, acrylic decorative bar, swipe card window. AI or CRD files required.*



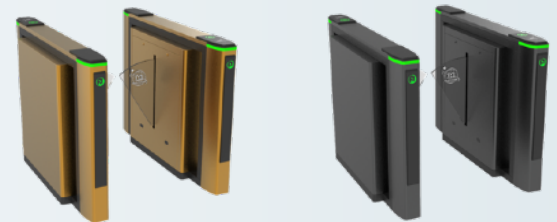
## LED colors can be customized

*Standard colors are blue, green and red.  
The following five colors are available.*



## Chassis color can be customized

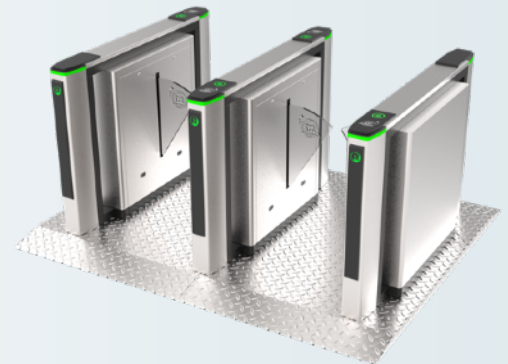
*Supports paint coated or galvanized.  
RGB, RAL or Pantone number required.*



## Customizable base plates

*Optional:*

- 1. Mounting base (for above floor wiring)*
- 2. Removable base with wheels (for temporary events)*

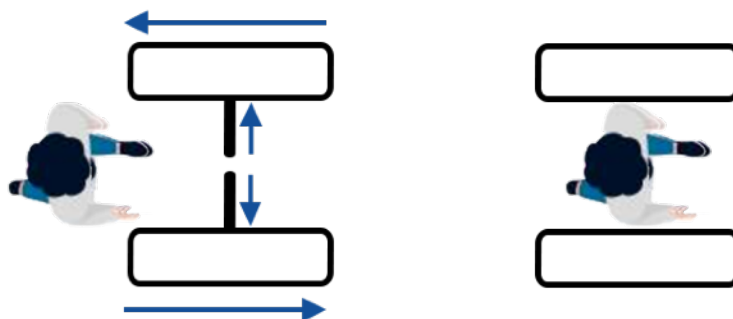


## Other customizable options

- Gate dimensions: Can be customized according to the site.
- Material: 304 stainless steel to 316 stainless steel, or iron with powder coated (color can be customized).
- Flap arm material available in acrylic or PU.
- Lights and infrared sensors can be added.
- Swipe card icon can be cancelled.
- Customized 3D drawings are available based on the site photos.
- OEM&ODM service is available.



Powered of equipment  
with Super Capacitor Backup



In case of a power outage, swing arms are unlocked  
and open automatically.

*Our gates come with relay signals and RS485/RS232 interfaces. You can use your own access control system, or we can provide a complete access control system to you.*



Remote control



Face recognition



RFID card



Fingerprint recognition



QR code/ barcode



Coin/card collection



Counter



Button



[www.mairseurope.eu](http://www.mairseurope.eu)



+48 662 778 757



[office@mairseurope.eu](mailto:office@mairseurope.eu)