

TURNSTILE GATE WITH ESD ACCESS CONTROL SYSTEM

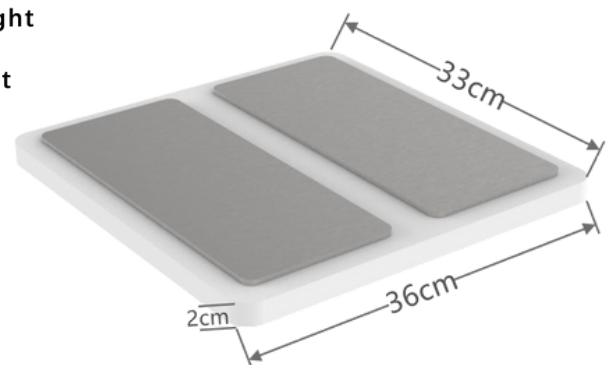
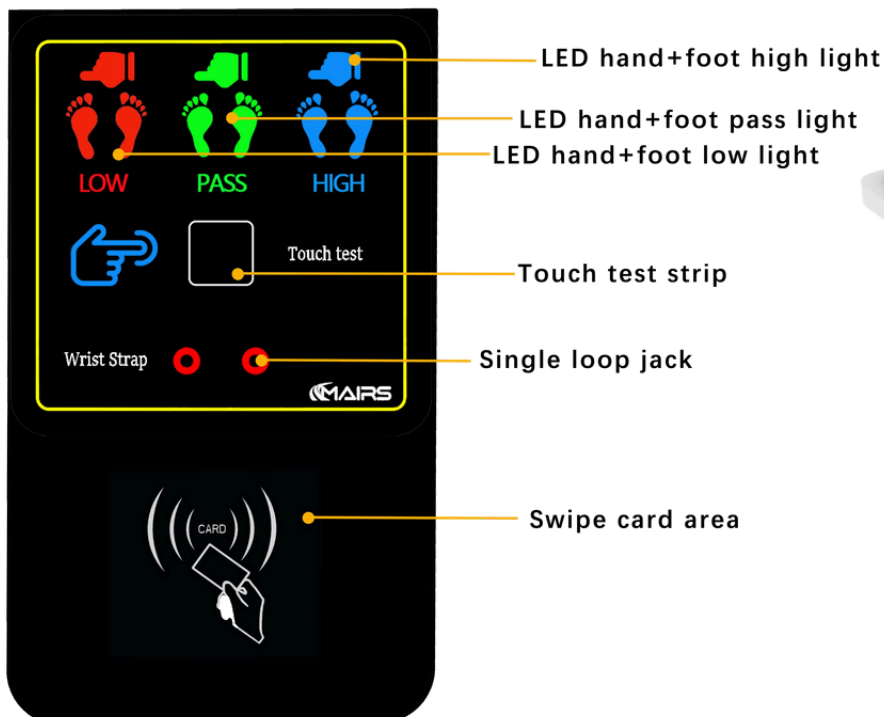


ESD turnstile access control system is carefully designed and manufactured based on years of technical channel access research and demand analysis. It integrates UHF card reading technology, network digital technology, remote alarm technology, computer network software technology, and barrier-free channel technology. The system meets the safety requirements of safe production. It is an integrated system integrating channel management system, monitoring system, anti-static access control system, voice prompt system, etc. Through the all-round monitoring of the electrostatic testing area, managers and management personnel can easily understand and grasp the use of gates and equipment operation conditions at various locations, and solve problems in time, which can effectively improve the work efficiency of management personnel. Necessary measures to improve management.



ESD TESTER PARAMETERS

| | | |
|----------------------------------|---|-------------|
| Working voltage | Input DC12V2A | |
| External dimensions | 175MM*105MM*8MM | |
| Gate opening size | Width 175mm*height 105mm*R3 | |
| Working hours | Unlimited | |
| Environmental conditions | Humidity | 0%~90% |
| | Temperature | -20C°~ 60C° |
| Instrument interface | Can be connected with single and double circuit, double pedals. It can be operated in a stand-alone machine, and the gate can be opened by test, or you can choose to swipe the card through the network + test the gate, and there is no test record for the stand-alone machine | |
| Protection measures | Semiconductor lightning protection | |
| Working frequency | Based on the reader | |
| Induction speed | Quick response to swiping card, less than 0.1 second, interval between repeated swiping cards is less than 1 second | |
| Input interface | Standard Wiegand 34/26 (RS232 input mode can be customized) | |
| Transmission distance | National standard five network cable> 100 meters | |
| Working environment | Temperature -20 °C ~ 60 °C , glue filling treatment, waterproof and | |
| Working status | dustproof | |
| Factory default resistance range | Wrist strap | 750KΩ~35MΩ |
| | Static shoes | 750KΩ~100MΩ |



Foot pedal upgrade

All the wiring screws are placed inside the pedals. Moisture-proof, waterproof, drop-proof, shielded, anti-interference, more accurate testing.



LINUX HOST PARAMETERS

| | |
|---|---|
| 802.11 B/G/N wireless LAN | |
| Bluetooth 4.1 | |
| Dual-core Videocore IV coprocessor | |
| Support all latest versions of LINUX operating system | |
| Memory | 2 G |
| Hard Disk | 16G |
| Microusb connector 2.5A power supply | |
| 1 HDMI video port 1 audio port | |
| 1 100m Ethernet port | |
| 4 USB2.0 ports 40 GPIO pins | |
| Resolution | Maximum support 1920*1080 |
| Shell material | Made of aluminum alloy with high heat dissipation aluminum material |
| Working environment | -15-60°C 0%-90% relative humidity |
| Operating system | LINUX |

Personnel photo display

The 8-inch display screen shows the test items



Device time and date

Device IP address

Physical card number

Device number

Communicate icons with the server



Power port

LAN cable port

HDMI cable port

MAIN FUNCTIONS OF THE SYSTEM

- Support simplified and traditional Chinese and English **3 languages**, choose any language, you can also customize to add other languages. **Real-time display** of test resistance value, visual display of icons, swiping card, etc., automatic data collection. Support full-screen record display, support live voice broadcast. **Test wrist strap** (support single loop/dual loop/cordless). **Test static shoes** (support single foot test and double foot test). The **test range range** can be written freely by the computer, and the range range value. **Integration** of test + swipe card + display, the integration of stainless steel and acrylic. Can coordinate with the **time and attendance software**, the database of the time and attendance software and the database of the ESD system software must be on the same computer. The **data sheet** provides import and export functions; it is convenient for customers to process work. The software automatically synchronizes the time, and the **personnel list is automatically synchronized** to the ESD equipment in real time. Support multiple **report export**, list of unswiped cards, test records divided into left foot, right foot, wrist, etc. **Data update** can be selected arbitrarily, the speed is stable, and the operation is free. The database can be connected with other software to support **real-time management** and monitoring of multiple users and multiple computers.



STANDAR COMPONENTS OF AN ESD TURNSTILE



Turnstile gate

*Other models are available.
Support customization.*



ESD tester



8-inch LCD monitor

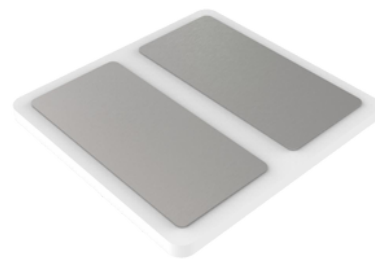


Linux box



RFID card reader

*Optional. Clients can use their
own readers.*



Foot pedal



OTHER GATE MODELS WITH THE ESD SYSTEM

* Any gate with a width greater than or equal to 200mm will fit the ESD system. Gate width supports customization.



ME224 with ESD
tester



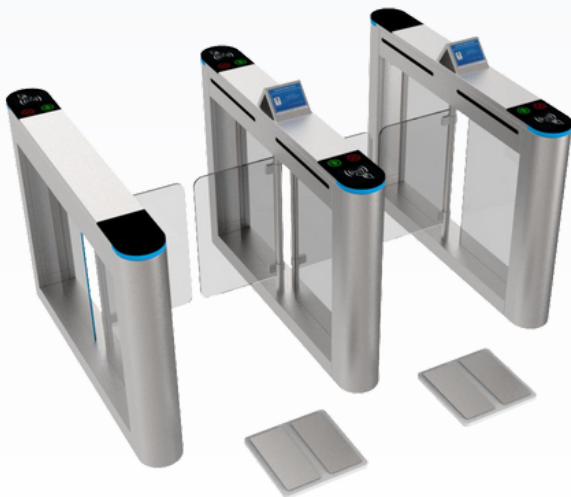
ME-257 with ESD
tester



ME-256 with ESD
tester



ME124 with ESD
tester



ME342 with ESD
tester



ME258 with ESD
tester

