

# FLAP TURNSTILE ME257

**ME257 flap turnstile** is a type of access control device used to manage pedestrian flow in secure areas. It consists of retractable flaps that act as barriers, allowing only authorized individuals to pass through while preventing unauthorized access. The flap turnstile is a security solution commonly found in areas where controlled entry is essential, such as public transportation stations, office buildings, stadiums, and more.

ME257 flap turnstile gate provides bi-directional and unidirectional access control and free passage modes. In access control mode, upon receipt of a valid card signal from an access control system, the motorized barrier flap of the turnstile quickly retract into the cabinet, and the integrated sensors allow a single user to pass through the turnstile in the requested direction. The front post LED will keep green arrow shows that the lane is available. The top LED will change based on the status of the gates.



PASSING SPEED



PASSAGE FOR DISABLE



BI-DIRECTION



POWER SUPPLY

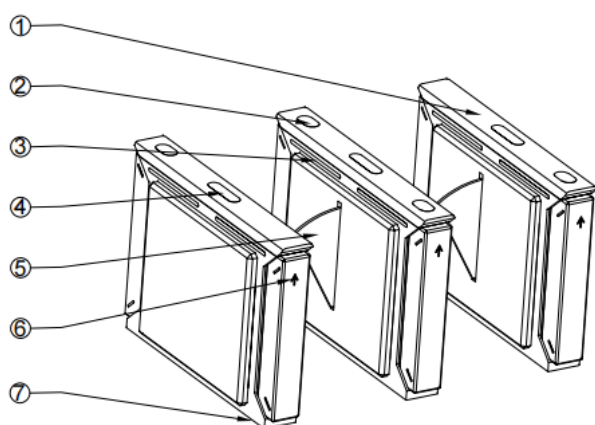


ANTI-TAILGATING

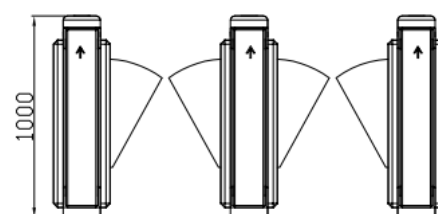
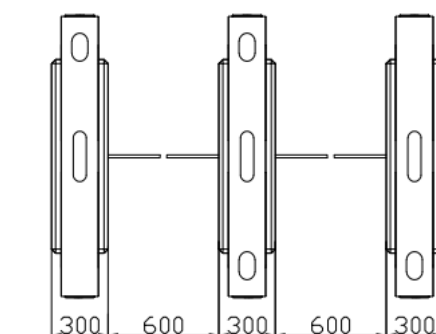
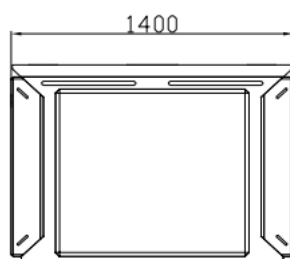


PROTECTIVE LEVEL

|                     |  |
|---------------------|--|
| Dimension           | 1400*300*1000mm<br>(4.95*0.98*3.28ft) (standard) |
| Passage Width       | 550mm (1.80ft)                                   |
| Pass Rate           | 35 person/min                                    |
| Mechanism           | Full height mechanism with DC motor              |
| IR sensor           | 5 pairs  |
| Frame Material      | SUS304   |
| Flap arm Material   | Acrylic Flap                                     |
| Power Supply        | 100V-240V, 50/60Hz                               |
| Open Signal         | Passive Relay (Dry Contact)                      |
| Communication       | RS485/RS232                                      |
| Working Direction   | Bi-directional(standard),<br>Unidirectional      |
| Working Temperature | -35°C ~ 60°C                                     |
| Working Environment | Indoor or outdoor                                |
| Relative Humidity   | 95% Maximum                                      |











- ① Iron with powder coated Top Lid
- ② Acrylic CARD Window
- ③ IR Sensor Cover
- ④ Lane Status Indicator
- ⑤ Acrylic Flap Arm
- ⑥ Direction Indicator
- ⑦ Position of Fixing Screw

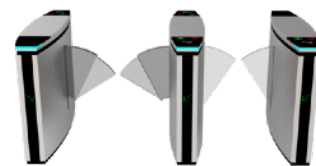


- **LED ALERTS** Indicate traffic direction with highly-visible green arrows and red X icons. The front post LED will keep green arrow shows that the lane is available.
- **EMERGENCY EXIT** The function allows free passage in the event of an emergency or power outage, automatic reset when power is restored.
- **WORKING DIRECTION** Single directional or Bi-directional is optional.
- **AUTOMATIC RESET** The flap arms will lock automatically within 5s (adjustable) if a person delay to access.
- **ANTI-PASS BACK** The gate will stay in lock if someone wants to entry in the reverse direction.
- **ANTI-INTRUSION** The gate is locked automatically until a valid open signal is sent.
- **FAST UNLOCK** One there is a valid signal, the gate will unlock within 0.2s (adjustable) .
- **HIGH PERFORMANCE** Long-life performance, high operation dependability and fast response.
- **HIGH MECHANISM** Full height mechanism, running smoothly and stable
- **ALARM FUNCTION** Infrared sensor alarm function, in

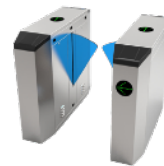
- Dimension: Can be made according to the client's site.
- Optional dual-layer retractable flap arm with a passing width of up to 900 mm (for wheelchairs and luggage).
- Flap arm color: Transparent color, blue and red available.
- Material: 304 stainless steel to 316 stainless steel (wet environment), or iron with powder coated (color can be customized).
- Lights and infrared sensors can be added.
- Mounting base (for above floor wiring) and removable base (for temporary events) can be added.
- Cutouts can be customized to fit any reader.
- LOGO can be customized.
- Customized 3D drawings are available based on the site photos.
- OEM& ODM service is available. ➤ Please check with sales for customization fees.

*Our gates come with relay signals and RS485/RS232 interfaces. You can use your own access control system, or we can provide a complete access control system to you.*

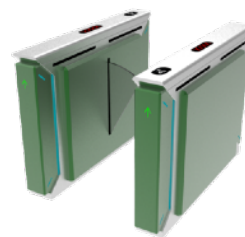
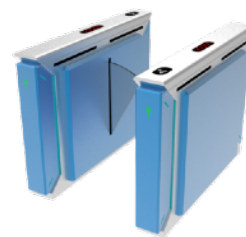
-  Remote control
-  RFID card
-  QR code/ barcode
-  Counter
-  Face recognition
-  Fingerprint recognition
-  Coin/Card collection
-  Button



*Dual-layer retractable flap arms*



*Blue flap arms*



*Other frame colors available, RAL or RGB required.*



Black



Gray



Green



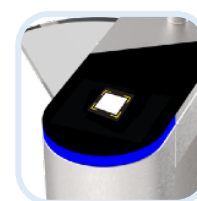
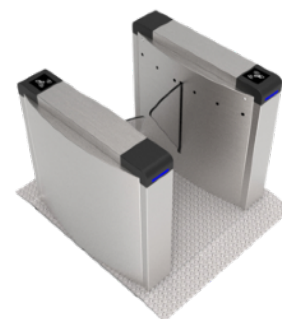
Blue



Red



*Mounting base*



*Cutouts can be customized to fit any reader.*

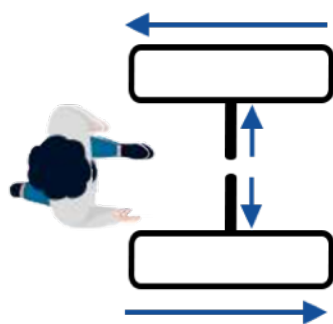


*LOGO can be customized.*





Powered of equipment  
with Super Capacitor Backup



In case of a power  
outage, obstacles are  
unlocked and  
automatically open in the  
direction of egress.



Obstacles are locked in  
the open position so as  
not to interfere with the  
evacuation process.



One lane



Two lanes



Three lanes



[www.mairseurope.eu](http://www.mairseurope.eu)



+48 662 778 757



[office@mairseurope.eu](mailto:office@mairseurope.eu)